

*The Hill Country*

APR | 2022

# ARTICLE

*Lemburg*  
HOUSE

**Sporting Clay  
Tournament**

**Member Highlight**

**HCBA Mixer**



Photo Courtesy of Omni Custom Homes



**BUILDING  
MATERIALS**

**Shop Where The Pros Buy**

**San Antonio | Uvalde | Pleasanton | Corpus Christi | Kerrville**

**Providing All Of Your  
Building Needs**

**In-Stock Quality Engineered Wood Products  
Dimensional Lumber  
Siding - Trusses - Millwork  
Installed Insulation**

**9501 New Laredo Highway**

**210-623-4770 | [www.mgbuildingmaterials.com](http://www.mgbuildingmaterials.com)**

# Remodeling Market Remains Stable Year-Over-Year

The National Association of Home Builders (NAHB) released its NAHB/Westlake Royal Remodeling Market Index (RMI) for the first quarter, posting a reading of 86, which remained unchanged compared to the first quarter of 2021. The finding is a signal of residential remodelers' confidence in their markets, for projects of all sizes.

"Business remains strong for most remodelers at the beginning of 2022," said NAHB Remodelers Chair Kurt Clason, a remodeler from Ossipee, N.H. "However, a few are starting to report that customers are reluctant to move forward on projects due to the delays and higher costs caused by supply chain problems."

The NAHB/Westlake Royal Remodeling Market Index RMI survey asks remodelers to rate five components of the remodeling market as "good," "fair" or "poor." Each question is measured on a scale from 0 to 100, where an index number above 50 indicates that a higher share view conditions as good than poor.

The Current Conditions Index is an average of three components: the current market for large remodeling projects, moderately-sized projects and small projects. The Future Indicators Index is an average of two components: the current rate at which leads and inquiries are coming in and the current backlog of remodeling projects. The overall RMI is calculated by averaging the Current Conditions Index and the Future Indicators Index. Any number over 50 indicates that more remodelers view remodeling market conditions as good than poor.

The Current Conditions Index averaged 89, remaining unchanged compared to the first quarter of 2021. The component measuring large remodeling projects (\$50,000 or more) rose four points to 89, while the component measuring moderately-sized remodeling projects (at least \$20,000 but less than \$50,000) fell one point to 89, and the component

measuring small remodeling projects (under \$20,000) declined by two points to 90.

The Future Indicators Index edged down two points to 82 compared to the first quarter of 2021. The component measuring the current rate at which leads and inquiries are coming in fell six points to 80, while the component measuring the backlog of remodeling jobs increased two points to 84.

"An overall RMI of 86 indicates positive remodeler sentiment and is consistent with NAHB's projection of moderate growth in the remodeling market for 2022," said NAHB Chief Economist Robert Dietz. "Nevertheless, rising interest rates and the high cost of materials are significant headwinds to the remodeling industry and the housing industry at large."

The NAHB/Westlake Royal Remodeling Market Index RMI was redesigned in 2020 to ease respondent burden and improve its ability to

—> *Remodeling story continues on page 13*



# HCBA

## Member Highlight



**MATTHEW SCHUMANN**  
Schumann  
Granite

Our April member highlight is our Association's Vice President of Associates, Matthew Schumann. Matthew has served on our board for over 6 years and continues to give generously to the HCBA.

Matthew started Schumann Granite over 20 years ago and has built a reputation on making their clients' vision a reality. Schumann Granite has set a new standard in the fabricating and installation of natural and engineered stone surfaces for residential and commercial projects in and around the Texas Hill Country. The Schumann Granite team provides their clients with excellent customer service and professionalism. This, among many

reasons, has made them an industry leader in the stone design business. In January, Matthew and his wife Kelly passed the torch to Ransom and Ashley Rust. They will continue to be very active and involved with Schumann Granite for years to come. Matthew and Kelly currently reside in Fredericksburg and have two children.

Matthew gives selflessly to many local organizations. You will find him either organizing or participating in our own Association's events. He has been on the Stonewall Volunteer Fire Department for 20 years, risking his life in many instances, to save others. During Hurricane Harvey, Matthew along with his fellow swift water rescue team, spent their time helping people trapped in the flood waters to safety. He has coordinated benefits and raised money for people in the community and will drop everything he is doing to help someone in need. These are just a few instances that describe how Matthew always puts others first.

—> *Member Highlight continues on page 14*

**Every month we will be showcasing one of our members. We are proud of our members and we would like to share with you a little bit of history, company information and community involvement on each member. If you would like to nominate a Company or Member to highlight, please email us at [info@hillcountrybuilders.org](mailto:info@hillcountrybuilders.org).**

The Hill Country Builders Association (HCBA) is a local trade association that offers opportunities to its members to display their products and services. We make no representation, express or implied, regarding the qualifications of members or the quality of their products and services, but invite you to examine them for yourself.

*The Hill Country Article* is the official publication of the HCBA. It is designed and produced by VH3 Creative, LLC and published monthly by HCBA.

HCBA Address - 1401 Broadway, St B1, Marble Falls, TX 78654 | Phone - (830) 798-2266 | Email us at [info@hillcountrybuilders.org](mailto:info@hillcountrybuilders.org) for more information.

# S★G

## SCHUMANN GRANITE



Providing Innovative Natural & Engineered Stone Solutions  
throughout the Texas Hill Country & Beyond.

**Call Today for a Design Consultation!**  
**830.997.1818**



NEW CONSTRUCTION • RESIDENTIAL • MULTIFAMILY • COMMERCIAL • RENOVATION & MORE

Visit our new website at  
[www.SchumannGraniteTX.com](http://www.SchumannGraniteTX.com)

10046 E US Hwy 290, Fredericksburg, TX 78624 | [Sales@SchumannGraniteTX.com](mailto:Sales@SchumannGraniteTX.com) | 830.997.1818



## BOARD MEMBERS

### **John Akin**

*President*

### **Matt Winsborough**

*Vice President*

### **Ryan Fleener**

*Secretary &  
Government Affairs*

### **Scott Streit**

*VP of Finance*

### **Richard Laughlin**

*VP of Trades*

### **Colby Duke**

*VP of Parade of Homes*

### **Seth Crain**

*VP of Fundraising*

### **Heath Jackson**

*VP of Memberships*

### **Matthew Schumann**

*VP of Associates*

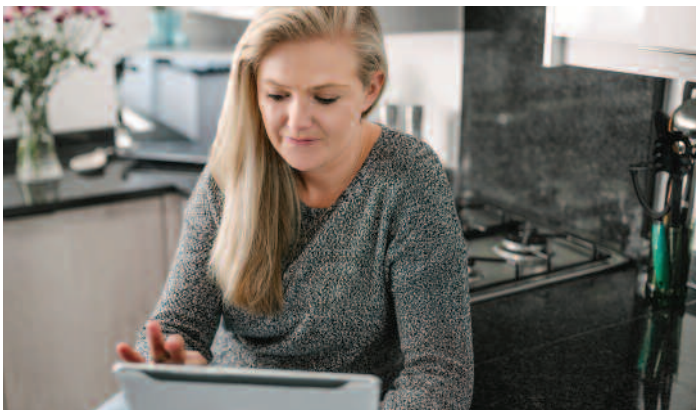
## STAFF

### **Melissa Eckert**

*Executive Officer*

### **Gina Graves**

*Memberships / Media  
Coordinator*



**Visit our website**

[hillcountrybuilders.org](http://hillcountrybuilders.org)

# Highest Paid Occupations In Construction In 2021

Half of payroll workers in construction earn more than \$49,070, and the top 25% make at least \$75,820, according to the latest May 2021 Bureau of Labor Statistics (BLS) Occupational Employment and Wage Statistics (OEWS) and NAHB analysis. In comparison, the U.S. median wage is \$45,760, with the top quartile (top 25%) making at least \$68,590. The top two highest paid occupations in construction are CEOs and lawyers, making more than \$162,390 and \$152,650 per year, respectively. Out of the next 13 highest paid trades in construction, 12 are various managers. The highest paid managers in construction are architectural and engineering managers, with half of them making more than \$135,900 annually.

Among construction trades, elevator installers and repairers top the median wages list, with half of them earning more than \$98,600 a year and the highest paid 25% making at least \$120,950. First-line supervisors of construction trades are third on the list, with median wages of \$72,600 and the top 25% highest paid supervisors earning in excess of \$91,310.

In general, construction trades that require more years of formal education, specialized training or licensing tend to offer higher annual wages. Median wages of construction and building inspectors are \$61,360, and the wages in the top quartile of the pay scale exceed \$78,940. Half of plumbers in construction earn more than \$59,810, with the top quartile making more than \$78,190. Electricians' wages are similarly high.

Carpenters are one of the most prevalent construction crafts in the industry. Although the trade

—> Occupations story continues on page 14

# GOLF TOURNAMENT



20

22

**JUNE 6, 2022**

INDIVIDUAL PLAYER | \$150.00  
TEAM OF 4 | \$600.00

GOLF · MEALS + DRINKS · NETWORK



**HORSEHOE BAY RESORT**

**APPLE ROCK**

INFO ON SPONSORSHIPS & REGISTRATION  
[MELISSA@HILLCOUNTRYBUILDERS.ORG](mailto:melissa@hillcountrybuilders.org)





# EXECUTIVE OFFICER

April was an exciting and busy month! We had the honor of representing our members by attending Texas Association of Builders - Winter Board Meetings, April 5th-7th. The Government Relations classes outlined TAB's advocacy efforts throughout the state and discussed what is on the horizon for our industry. The takeaway from these meetings is an extensive amount of information, but I am excited to apply what I learned to our association and keep our members involved and informed.

The following week, we hosted a Lunch and Learn where our members had a chance to be educated on the recent FEMA changes to Flood Insurance and the rate increase builders can expect. Herb Darling with Burnet County Development Services led an in-depth discussion on these issues and informed everyone on the platting changes across the county.

The HCBA closed out April with a Bang! We hosted our Annual Sporting Clay Tournament at the Copperhead Creek Shooting Club and raised money

to support our youth trades initiatives. Thank you to Matthew Schumann for chairing this fun and successful event. Congratulations to each of our winners and thank you to our sponsors; without you these events would not be possible.

May is going to be an exciting month as we have our first Mixer on May 19th. Join us at JBAR Enterprise's new location for some amazing food catered by OchoOrleans, drinks and a variety of awesome door prizes. JBAR will also be selling raffle tickets for a stay at the new Kalahari Resort in Round Rock that will benefit the Highland Lakes Crisis Network. Be sure to keep an eye out for details on the JBAR Mixer!

Again, we thank you for your support and membership. We are proud of our members and enjoy watching them flourish!

**MELISSA ECKERT**  
HCBA Executive Officer

## 2022 ANNUAL Partners

Thank you to our Annual Partners for generously committing to sponsor multiple events throughout the year. Your continuous giving plays a huge role in the success of our Association.

### PLATINUM



### GOLD







*Photo Courtesy of StrucSure Home Warranty Member, Artisan Creative Homes.*

## Give your homebuyers the security of the financially strongest 10-year insurance backed warranty in the industry.

- ✓ MIRROR IMAGING OF TAB PERFORMANCE STANDARDS
- ✓ SOIL MOVEMENT AND SETTLEMENT COVERAGE
- ✓ FAST AND FAIR CLAIMS MANAGEMENT
- ✓ REINSURED BY A-RATED LLOYD'S OF LONDON
- ✓ TAB APPROVED BUILDER'S RISK INSURANCE PROGRAM:  
VISIT [SHWINS.COM/BUILDERSRISK](https://www.shwins.com/buildersrisk) FOR A QUICK & EASY RATE QUOTE



**STRUCSURE**  
HOME WARRANTY

**HOW THE NATION'S BEST BUILDERS PROTECT THEIR BUYERS**



### **SCOTT WHISENANT**

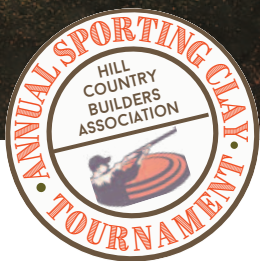
Vice President of Sales,  
Central & Southwest Texas  
(830) 624-4450  
[swhisenant@strucsure.com](mailto:swhisenant@strucsure.com)  
[www.strucsure.com](http://www.strucsure.com)

**REINSURED BY**

**LLOYD'S**

# ANNUAL SPORTING CLAY TOURNAMENT





## THANKS TO OUR SPONSORS!

C&D Home  
Appliance Studio  
Facets/Moore Supply  
Builders FirstSource

Strucsure Home Warranty  
First United Bank & Trust  
MG Building Materials  
FieldsCo. Builders  
Schumann Granite  
Hotchkiss Insurance

Lemburg House  
Akin Construction Co.  
Architectural Surfaces  
Fleener Greathouse  
Gadwall Custom Homes

MAY 19TH, 2022 | 6:00-8:30PM

# MIXER

JBAR Enterprises



JOIN US AT JBAR'S NEW  
LOCATION FOR OUR  
FIRST MIXER OF 2022!

COME OUT FOR FOOD, DRINKS AND  
NETWORKING WITH OTHER INDUSTRY  
PARTNERS!

THERE WILL BE DOOR PRIZES ALONG WITH  
A TRIP RAFFLE FOR THE NEW KALAHARI  
RESORT IN ROUND ROCK. PROCEEDS WILL  
BENEFIT THE HIGHLAND LAKES CRISIS  
NETWORK.

- REGISTER AT -

[WWW.HILLCOUNTRYBUILDERS.ORG](http://WWW.HILLCOUNTRYBUILDERS.ORG)

*2105 S. WATER STREET, BURNET TX 78611*

## 2022 ADVERTISING RATES

<p><b>FULL PAGE PREMIUM AD</b></p> <p>Premium placement on inside front or inside back cover</p> <p>7.75" x 10.125"</p> <p>6 Month Campaign</p> <p><b>\$350 / Month</b></p>	<p><b>FULL PAGE AD</b></p> <p>7.75" x 10.125"</p> <p>6 Month Campaign</p> <p><b>\$300 / Month</b></p>	<p><b>HALF PAGE AD</b></p> <p>7.75" x 4.937"</p> <p>6 Month Campaign</p> <p><b>\$250 / Month</b></p>	<p><b>QUARTER PAGE AD</b></p> <p>3.75" x 4.937"</p> <p>6 Month Campaign</p> <p><b>\$150 / Month</b></p>	<p><b>BUSINESS CARD AD</b></p> <p>3.5" x 2"</p> <p>6 Month Campaign</p> <p><b>\$75 / Month</b></p>
---	---	--	---	--

The Hill Country Article is a monthly publication of the Texas Hill Country Builders Association featuring industry news, articles, member highlights and opportunities for our members to advertise to other members and the community at-large.

For more information, visit our website at [www.hillcountrybuilders.org](http://www.hillcountrybuilders.org) or email us at [info@hillcountrybuilders.org](mailto:info@hillcountrybuilders.org)

**HCBA** Building a better future.

—> Remodeling story continued from page 3

interpret and track industry trends. As a result, readings cannot be compared quarter to quarter until enough data are collected to seasonally adjust the series. To track quarterly trends, the redesigned RMI survey asks remodelers to compare market conditions to three months earlier, using a "better," "about the same," "worse" scale. Seventy-two per-

cent of respondents said the remodeling market is "about the same" as it was three months earlier.

For the full RMI tables, please visit <http://www.nahb.org/rmi>.

Courtesy of NAHB



# MEMBERSHIP

## NEW MEMBERS & RENEWALS

### NEW MEMBERS

#### TITLE COMPANY

##### **Aqutitle**

Kim Cantwell  
605 Avenue G  
Marble Falls, Texas 78654  
kim@aqutitle.com

#### CUSTOM ORNAMENTAL IRON PRODUCTS

##### **Colonial Iron Doors**

Valeria Villanueva  
12133 Colwick Street  
San Antonio, Texas 78216  
admin@colonialirondoors.com  
(210) 524-1062

#### PORTABLE TOILETS

##### **Hill Country Pump Service**

Duane Neffendorf  
116 Neffendorf Trail  
Fredericksburg, Texas 78624  
hillcopotty@yahoo.com  
(830) 997-8855

#### CUSTOM HOME BUILDER

##### **Savage Custom Homes**

Richard Savage  
515 Highland Spring Lane  
Georgetown, Texas 78633  
richard@savagecustomhomes.com  
(512) 905-6545

### RENEWALS

##### **C&D Home Products Studio**

**Dartez Brothers Construction, Inc.**

**Educated Roofing Systems, Inc.**

**Expressions Home Gallery**

**Ferguson Enterprises**

**Fredericksburg Custom Cabinets**

**Hancock Homes, LLC**

**Hawkeye Builders, Inc.**

**Independence Title**

**JB Sales, Inc.**

**Lake Life Realty**

**MSI Surfaces**

**Parrish & Company, Inc.**

**Renaissance Windows & Doors**

**Security State Bank & Trust**

—> *Member Highlight continued from page 4*

Matthew is also one of the founding members of the Casa Uber Alles high school trades program in Fredericksburg. Matthew volunteers his time to help educate our youth about the different options in the building industry today. This program is nationally recognized, has won numerous awards and now will be expanding to other schools across Texas.

If you ask anyone about Matthew Schumann, you will consistently hear about his passion towards anything he does, his work ethic and how he graciously gives beyond anyone's expectation.

Matthew, there are not enough ways to articulate how blessed we are to have you as part of our board, and we truly thank you for your advocacy and servitude to the Hill Country Builders Association.

—> *Occupations story continued from page 6*

requires less formal education, the median wages of carpenters working in construction exceed the national median. Half of these craftsmen earn more than \$48,420, and the highest paid 25% make at least \$62,370.

NAHB's AVP for Housing Policy Research Natalia Siniavskaia provides more analysis in this Eye on Housing blog post.

*Courtesy of NAHB*

# Protecting the Possible.

- ✔ General Liability
- ✔ Builder's Risk
- ✔ Workers Compensation
- ✔ Property
- ✔ Commercial Auto
- ✔ Umbrella Policies

Contact us today!

Colby Duke  
210.240.5155  
cduke@hiallc.com



**HOTCHKISS**  
INSURANCE

[www.hiallc.com](http://www.hiallc.com)



# MEMBERSHIP NEWS

Do you know someone eager to get into the trades industry?

The Texas Builders Foundation, the charitable arm of the Texas Association of Builders, has a scholarship program for young adults entering higher education or trades programs in order to enter this exciting industry. Their 2022 scholarship application period is open now and was just extended to May 13, 2022. Applicants must have been accepted or are enrolled for the upcoming fall semester as a student in a Texas technical or trade school or community college or university and must

be pursuing a residential construction-related trade certification or residential construction degree. The applicant must demonstrate an interest in obtaining employment in the home building industry upon graduation. If you know someone who could benefit from this generous scholarship send them to <https://www.texasbuildersfoundation.org/scholarships-grants/>.

## GINA GRAVES

HCBA Membership / Media Coordinator

# HCBA **Building a better future.**

**NAHB members**  
could save with a special  
discount from GEICO



**GEICO**  
MEMBER DISCOUNT  
[www.geico.com/disc/nahb](http://www.geico.com/disc/nahb)



Some discounts, coverages, payment plans, and features are not available in all states, in all GEICO companies, or in all situations. GEICO contracts with various membership entities and other organizations, but these entities do not underwrite the offered insurance products. Discount amount varies in some states. One group discount applicable per policy. Coverage is individual. In New York a premium reduction may be available. GEICO may not be involved in a formal relationship with each organization; however, you still may qualify for a special discount based on your membership, employment or affiliation with those organizations. GEICO is a registered service mark of Government Employees Insurance Company, Washington, DC 20076; a Berkshire Hathaway Inc. subsidiary. GEICO Gecko image © 1999-2020. © 2020 GEICO



2022 | Hill Country Builders Association

# PARADE of HOMES

Two weekends to view stunning homes  
and experience Hill Country Living!

OCTOBER  
15<sup>th</sup> ★ 16<sup>th</sup> & 22<sup>nd</sup> ★ 23<sup>rd</sup>





H/C  
HILL COUNTRY  
BUILDERS  
ASSOCIATION

## GET INVOLVED!

- TRAIN THE NEXT GENERATION OF TRADESMEN.
- WORK ALONGSIDE LOCAL BUILDING PROFESSIONALS
- COMMUNITY INVOLVEMENT
- HELP RESTORE PRIDE AND REINVIGORATE THE BUILDING TRADES INDUSTRY

Casa Über Alles was created by the Hill Country Builders Association to the work with local area high schools' CTE Building Trades education programs to give students hands-on experience and on-the-job knowledge.

It is imperative that we enable our next generation of builders and tradesmen to pursue further education. This ensures our youth will understand all aspects of the building process and take pride in seeing a complete home project to its entirety.

To become part of the CASA ÜBER ALLES program, please reach out to Richard Laughlin, HCBA's Vice President of Trades, Ben Fuller & John Akin, Project Supervisors or the HCBA office.

Billie Pride, Über Alles!



RICHARD L. | [RL@HILLCOUNTRYBUILDER.COM](mailto:RL@HILLCOUNTRYBUILDER.COM)  
HCBA | [INFO@HILLCOUNTRYBUILDERS.ORG](mailto:INFO@HILLCOUNTRYBUILDERS.ORG) | (OFFICE) 830-798-2266  
[MORE INFORMATION: HIGHSCHOOLBUILDINGTRADES.ORG](http://MOREINFORMATION.HIGHSCHOOLBUILDINGTRADES.ORG)

2022 | Hill Country Builders Association

# PARADE of HOMES

## ABOUT THE PARADE OF HOMES

The Hill Country Parade of Home Tour welcomes visitors from all over the state and beyond for two weekends every year in October. Attendees will experience the latest in Hill Country living. Any size and style of home is welcome in the HCBA Parade of Homes, provided it is submitted by an HCBA builder member in good standing. New, showcase model and remodeled homes are welcome to enter. Each entry is featured in all Parade publications, television, signage and across HCBA social media.

## WHY BE A PART OF OUR PARADE?

- ★ Builders average 6 referrals per Parade
- ★ Featured in Parade Magazine and website
- ★ Homes are professionally judged and awarded
  - ★ Thousands of Parade attendees
- ★ Television segments / Commercials advertising for the Parade

## GET LOCKED IN AT A LOWER COST!

- ★ Early Registration (Before May 1st) | **\$3,000.00**
- ★ Regular Registration (Before July 1st) | **\$3,500.00**
- ★ Late Registration (July 2nd - September 1st) | **\$4,000.00**

**HOMES WILL NOT BE ACCEPTED AFTER SEPTEMBER 1, 2022**



1401 Broadway, St B1  
Marble Falls, Texas 78654

# Like you, we're building this community for the better.

At FirstCapital Bank of Texas, you'll find an experienced team that puts your business – and our community – above all. We're the local lender behind commercial, residential and mixed-use development big and small, and we'll be by your side, every step of the way.



FCBTexas.com | 830.798.6900

